

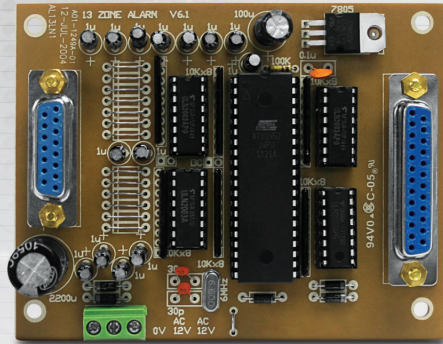
CHE-13ZAM

13 Zones Alarm Module

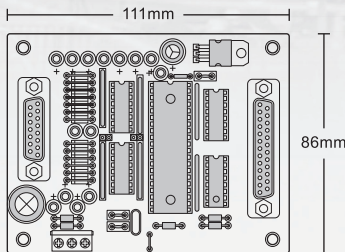


Features

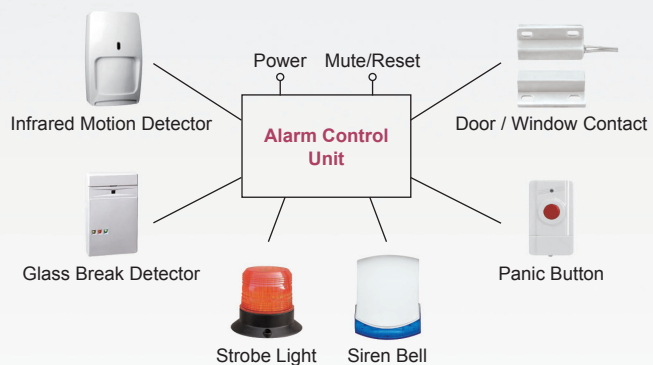
- ❖ CHE-13ZAM is a high performance local alarm control panel designed for residential and commercial protections.
- ❖ It features of 13 zones sensor inputs / outputs, Alarm Reset, Mute Buzzer and Lamp Test Functions.
- ❖ Support varies of intrusion detectors, such as:
Door / Window Contact, Glass Break Detector, Infrared Motion Detector, Ultrasonic Sensor, Panic Button and more.



Dimensions



Alarm System Typical Block Diagram



Specifications

Model	CHE-13ZAM
Input	<ul style="list-style-type: none"> • 13 Zones Alarm Input • Reset Alarm Input • Mute Buzzer Input • Lamp Test Input
Output	<ul style="list-style-type: none"> • 13 Alarm Status Output (LED) • Buzzer Output
Selectable Option	Selectable Input – NC. / NO.
Power Requirement	12 VDC
Power Consumption	< 1.5W
Environment	-10°C - 50°C
Dimension (mm)	111(W) x 86(H)

* All Specifications / colors are subject to change without notice. (V.01)