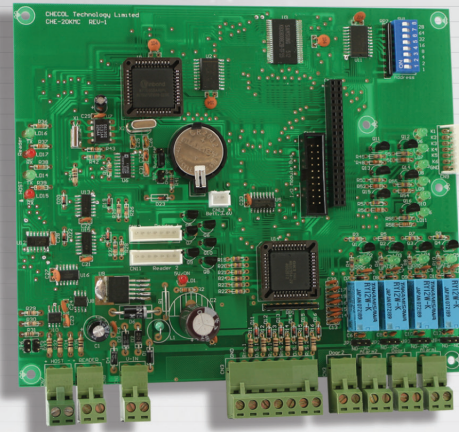


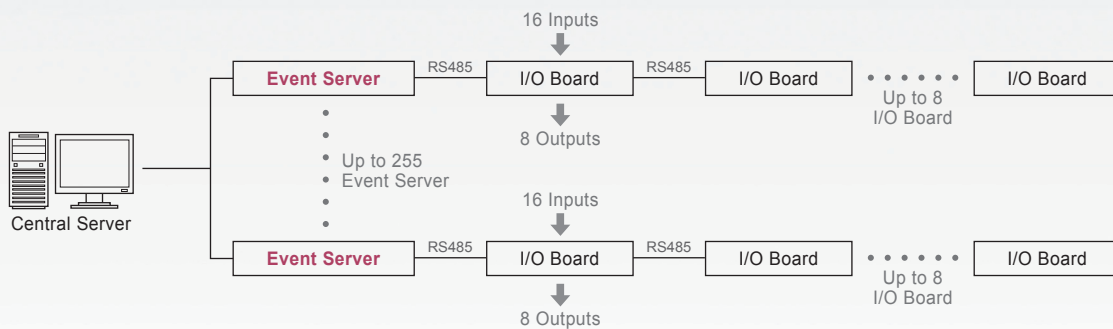


Features

- ❖ 1 RS-485 serial port supports 8 I/O Board (CHE-AL24IO)
- ❖ Controller can be linking up to 2048 input and 1024 output points
- ❖ Support up to 20,000 transactions records
- ❖ Built-in watchdog to prevent the system from halting
- ❖ 1000 interlock logic for I/O points
- ❖ 255 time schedules for I/O points
- ❖ 255 holidays setup
- ❖ Latch input can catch stage change within 0.01 sec.
- ❖ Programmable input type normal close / normal open
- ❖ Group input and output function
- ❖ Built-in power and RS-485 transmission LED indicator for signal state
- ❖ Built-in watchdog to prevent the system from halting
- ❖ Data retains over 30 days when power failure

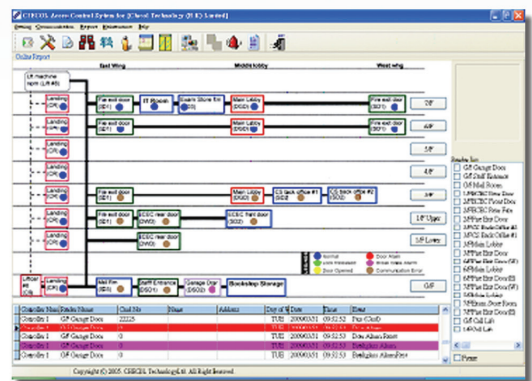


Network Diagram



CHECOL Digital Monitoring System software

- ❖ Support Microsoft Windows 2000, XP, 2003 and Vista.
- ❖ Use Microsoft SQL Database technology provides more reliable performance.
- ❖ Real Time monitoring with graphical user interface.
- ❖ Support Multi-Client controls the system at the same time.



* All Specifications / colors are subject to change without notice. (V.01)