



IP816A-LPC Fixed Network Camera



WDR Pro • SNV • Remote Back Focus • DIS •
Snapshot Focus • Corridor View • License Plate Capture

VIVOTEK's IP816A-LPC is a professional box network camera offering perfect solutions for License Plate Capture with a unique headlight filter design for traffic monitoring. Featuring dedicated LPC firmware and mutually compatible lens, the IP816A-LPC provides 2 different models: the IP816A-LPC (Highway) is perfect for highway based application with 85MPH (140 km/hr), and the IP816A-LPC (Street) is perfect for Street based application with 60MPH (90 km/hr). With a suitable selection of external IR LEDs, these camera will be ideal for 24/7 license plate capture and will provide high-detail polished images for reliable license plate recognition.

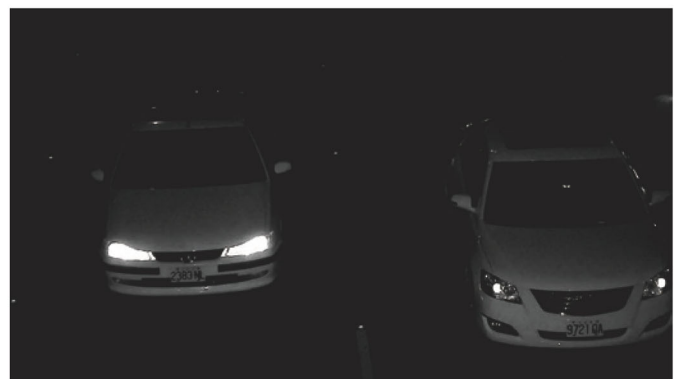
Equipped with a P-iris lens for extreme precision images, a headlight filter design which blocks distracting lights, and Full HD sensor enabling viewing resolution of 1920x1080 at a smooth 30

fps, the IP816A-LPC is capable of capturing high quality and high resolution video in any conditions. With up to 2 Megapixel with WDR Pro, 3DNR and SNV technology, no matter whether in high contrast or in low light environments, this camera is high-tech workhorses which will ensure license plate capture and traffic monitoring of the highest precision.

In order to help properly adjust the focus of this high resolution camera, the IP816A-LPC is equipped with VIVOTEK's RBF (Remote Back Focus) System, allowing installers to adjust focus even more accurately in complicated or sensitive installation environments. Meanwhile, value-added features like DIS and Snapshot Focus ensure that the IP816A-LPC performs as the perfect LPR solution by empowering installers to adjust camera positions and focus with extreme precision.

Key Features

- 30 fps @ 1920x1080;
60 fps @ 1920x1080 (one-stream mode only)
- Supreme Anti-Glare Capability by Headlight Filter Design
- WDR Pro (100 dB) to Provide Extreme Visibility in High Light Contrast Scenes
- SNV (Supreme Night Visibility) for Low Light Conditions
- RBF System to Assist for Precise Focus Adjustment
- DIS (Digital Image Stabilization) to Control Image Stability
- Lens Profile for Camera Quality Optimization
- Snapshot Focus



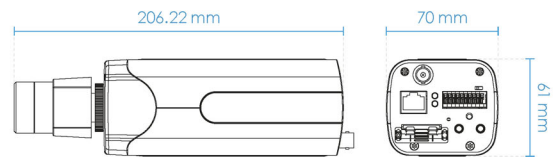
Supreme Anti-Glare Capability:
Clear Image Captured with IR Illuminators and Headlight Filter

Technical Specifications

Model	IP816A-LPC (Highway) IP816A-LPC (Street)	Compression	AAC, G.711, G.726
System Information		Interface	External microphone input Audio output
CPU	Multimedia SoC (System-on-Chip)	Network	
Flash	256MB	Users	Live viewing for up to 10 clients
RAM	384MB	Protocols	IPv4, IPv6, TCP/IP, HTTP, HTTPS, UPnP, RTSP/ RTP/RTCP, IGMP, SMTP, FTP, DHCP, NTP, DNS, DDNS, PPPoE, CoS, QoS, SNMP, 802.1X, UDP, ICMP, ARP, SSL, TLS
Camera Features		Interface	10 Base-T/100 BaseTX Ethernet (RJ-45) *It is highly recommended to use standard CAT5e & CAT6 cables which are compliant with the 3P/ETL standard.
Image Sensor	1/1.9" Progressive CMOS	ONVIF	Supported, specification available at www.onvif.org
Maximum Resolution	1920x1080 (2MP)	Intelligent Video	
Lens Type	Vari-focal	Video Motion Detection	Triple-window video motion detection
Focal Length	f = 12 ~ 40 mm	Alarm and Event	
Aperture	F2.36 ~ F2.44	Alarm Triggers	Motion detection, manual trigger, digital input, periodical trigger, system boot, recording notification, camera tampering detection, audio detection
Auto-iris	P-iris (DC-iris reserved)	Alarm Events	Event notification using digital output, HTTP, SMTP, FTP, NAS server and SD card File upload via HTTP, SMTP, FTP, NAS server and SD card
Field of View	10.2° ~ 30° (Horizontal) 8° ~ 22° (Vertical) 12° ~ 38° (Diagonal)	General	
Shutter Time	IP816A-LPC (Highway): 1/1600 to 1/10,000 sec. IP816A-LPC (Street): 1/800 to 1/10,000 sec. Max. Shutter Time: 1/5 to 1/10,000 sec.	Smart Focus System	RBF (Remote Back Focus)
WDR Technology	WDR Pro	Connectors	RJ-45 for Network/PoE connection Audio input/output BNC Video output AC 24V power input DC 12V power input Digital input*3 Digital output*1 RS485
Day/Night	Removable IR-cut filter for day & night function	LED Indicator	System power and status indicator
Minimum Illumination	0.03 Lux @ F1.4 (Color)	Power Input	DC 12V/AC 24V IEEE 802.3af PoE
Pan/Tilt/Zoom Functionalities	ePTZ: 48x digital zoom (4x on IE plug-in, 12x built in)	Power Consumption	Max. 9.2 W (DC 12V) Max. 15.4 W (AC 24V) Max. 12.2 W (PoE)
On-board Storage	Slot type: SD/SDHC/SDXC card slot Seamless Recording	Dimensions	230.2 (D) x 70 (W) x 63.5 (H) mm
Video		Weight	632 g (without Lens) 735 g (with Lens)
Compression	H.264 & MJPEG	Safety Certifications	CE, LVD, FCC Class B, VCCI, C-Tick, UL
Maximum Frame Rate	30 fps @ 1920 x1080 60 fps @ 1920 x1080 (In one-stream mode only) In both compression mode	Operating Temperature	Starting Temperature: 0°C ~ 60°C (32°F ~ 140°F) Working Temperature: -10°C ~ 60°C (14°F ~ 140°F)
Maximum Streams	2 simultaneous streams	Humidity	90%
S/N Ratio	50.8 dB	Warranty	36 months
Dynamic Range	Up to 100 dB	System Requirements	
Video Streaming	Adjustable resolution, quality and bitrate	Operating System	Microsoft Windows 8/7
Image Settings	Time stamp, text overlay, flip & mirror; Configurable brightness, contrast, saturation, sharpness, white balance, exposure control, gain, backlight compensation, privacy masks, scheduled profile settings; 3D noise reduction, DIS, video rotation, snapshot focus		
Audio			
Audio Capability	Two-way audio (full duplex)		

Technical Specifications

Web Browser	Mozilla Firefox 7~43 (streaming only) Internet Explorer 10/11
Other Players	VLC: 1.1.11 or above Quicktime: 7 or above
Included Accessories	
Others	Quick installation guide, warranty card, lens, camera stand, screw pack
Dimensions	



Compatible Accessories

Lens



AL-239
8 ~ 80 mm, F1.6, DC-iris



AL-24A
12 ~ 40mm, F1.8, P-iris
(Standard Package)



AL-24B
3.6 ~ 17 mm, F1.5, P-iris

Others

Brackets



AM-314
Pole mount bracket



AM-315
Pole mount bracket

Power Supply



HLG-120H-24
120W Single Output
Switching Power
Supply

Power Box



AA-351
Outdoor power box,
IP67, IK10



AA-352
Outdoor power box,
IP67, IK10

Distributed by:



CHECOL TECHNOLOGY LIMITED

Tel / Fax : +(852) 2560 7011 / +(852) 2535 6388

Email : mail@checol.com

Address : G/F, 57 King Yip Street, Kwun Tong, Kowloon, HK



All specifications are subject to change without notice. Copyright © VIVOTEK INC. All rights reserved. Ver. 17