

# Access Control (Lite) Software



**Checol Access Control (Lite) Software** is an access control software that modulated and seamlessly integrated car park control, elevator control, and door monitoring system. It also provides full access control features with user defined group anti-passback, door alarm graphic map, drag and drop alarm icons.



- Alarm
- Door Monitoring
- Security
- Access Control
- Car Park Control
- Combination Lock
- Elevator Control

## Overview

### Installation Environment

- CPU : Pentium Dual Core or Above
- RAM : 2GB or Above
- HDD Memory Size : 2GB or Above
- Port : 1 Serial Port or Above
- OS : Windows 7 or Above

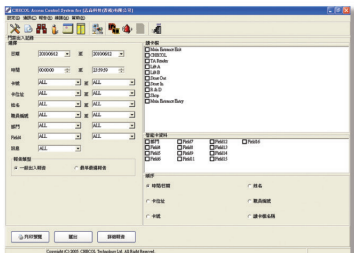
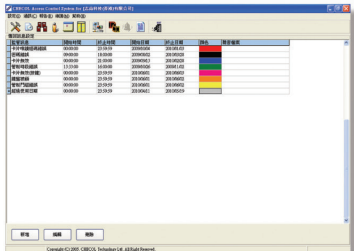
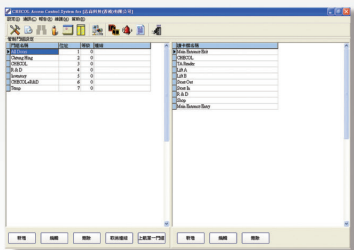
## Function Features

### Access Control System

- ❖ Real time monitoring of door access and alarm event
- ❖ Intelligent access control by cardholder, group and time schedule
- ❖ Card holder activation and de-activation
- ❖ Automatic card expiration by date
- ❖ Group Anti-pass back
- ❖ Administrative menu is controlled by password
- ❖ User options of event display and sound by event type
- ❖ User defined access control report
- ❖ Data export in Excel and Text file format
- ❖ Event report export to Excel, Html, Txt file format
- ❖ Long access / disabled access
- ❖ Automatic door, output opening by time schedule

### Door / Alarm Status and Control

- ❖ Direct door and alarm device controlled by individual or by group
- ❖ User monitor access door status in real time
- ❖ The icon status is updated in real time (Door Open, Door Closed, Lock and Unlock)
- ❖ User can control Lock, Unlock of access door of entire, area type, floor type, individual type door
- ❖ User monitor alarm device and other output status in real time
- ❖ The icon status is updated in real time (Active, Inactive)



\* All Specifications / colors are subject to change without notice. (V.02)