

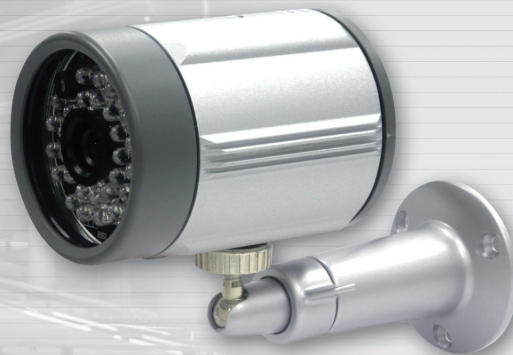
# CP-3328

IR Camera

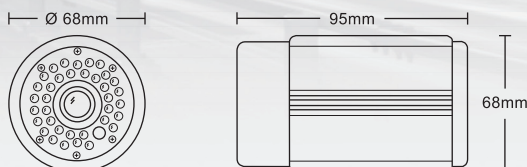


## Features

- ❖ High Sensitive 1/3" SONY Super HAD CCD
- ❖ High Resolution (630 TV lines)
- ❖ Built-in 36 IR LEDs and Sensor
- ❖ 20 meters IR Range
- ❖ IP 65 Protection Resistance
- ❖ Build-in Fixed Lens (f=3.6mm)
- ❖ Min. Illumination : 0.00 Lux (IR LED on)
- ❖ ATW, AGC, BLC



## Dimensions



## Specifications



Model	CP-3328
Image Device	1/3" SONY Super HAD CCD
Lens Mount	N/A
Lens	Standard 3.6mm at F=2.0 (From 3.6mm to 12mm lens select)
Effective Pixels	PAL: 752(H) x 582(V) NTSC: 768(H) x 492(V)
Horizontal Resolution	630 TVL
Scanning System	625Line(PAL), 525Lines(NTSC) 2:1 interlace
Scanning Frequency	PAL: 15.625KHz (H), 50Hz (V) NTSC: 15.734KHz (H), 60Hz (V)
Synchronization	Internal
Minimum Illumination	0.1 Lux.(Day)/ 0Lux (IR LED On)
S/N Ratio	More than 48dB (AGC off)
Video Output	1 Vp-p, 75Ω Composition, BNC x 1
Electronic Shutter	PAL: 1/50 to 1/100,000 sec. NTSC: 1/60 to 1/100,000 sec.
Gamma Correction	0.45
IR LED	36 LEDs
Radiant Distance	20 meters
Water Resistance	IP65
White Balance	Auto Tracking White Balance
Back Light Compensation	ON
Auto Gain Control	Build-in
Power Supply	DC 12V
Operating Temperature	-10°C to 50°C
Operating Humidity	80% RH Max.
Dimension (mm)	Ø 68 x 95(L)
Weight	440g (without bracket)

\* All Specifications / colors are subject to change without notice. (V.06)